

IOWA

Facilities Management

Welcome!

**Monthly Building
Coordinator Meeting
Via Zoom**

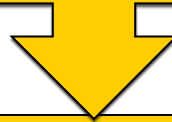
November 19, 2025



Agenda

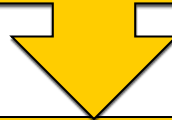
Campus Beautification Updates and Winter Preparation

Scott Gritsch, Director & Michael Weikamp, Manager – FM Landscape Services



Utility Team Overview

*Ben Anderson, FM Director of Strategy & Operations; Rob Murray, Engie;
Rick Ney, University of Iowa Energy Collaborative*



No December meeting - see you next year!

Landscape Services

Campus Beautification Updates and Winter Preparation

Building Coordinators Meeting

November 19, 2025

FM Services Guide

<https://facilities.uiowa.edu/fm-services-guide>

FACILITIES MANAGEMENT SERVICES GUIDE

FM Landscape Services is “green”

Overview of Services

Building Operations and Maintenance

Custodial Services

Landscape Services

Utilities

Capital Project Management

Facilities Information Systems (and Campus Planning and Development)

Administrative

Miyawaki Forest Planting

4,000 native tree seedlings planted by 600 students and community volunteers over four days, starting on Arbor Day.



Tours & Plantings

Anne Frank Day tour.

Grandparents
University tree tour.

Arbor Day tree
planting Bedell
Center.

Tree Tours with
Pentacrest Museums.



Boyd Law Building

South entrance renovation before and after photos this past fall.
Planting pollinator garden next spring.



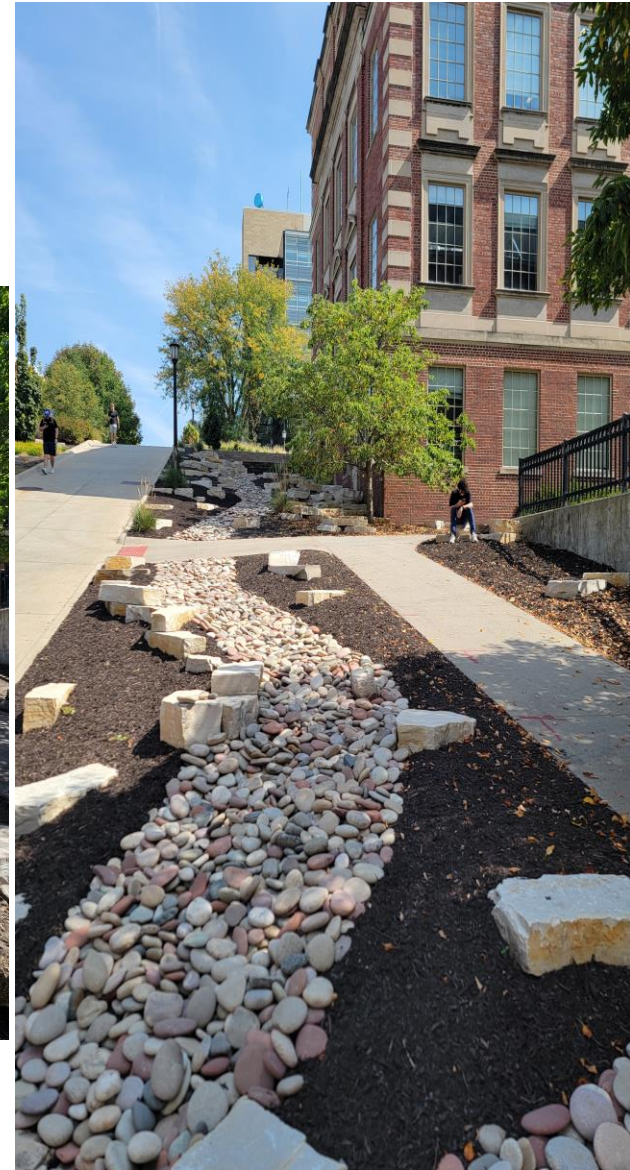
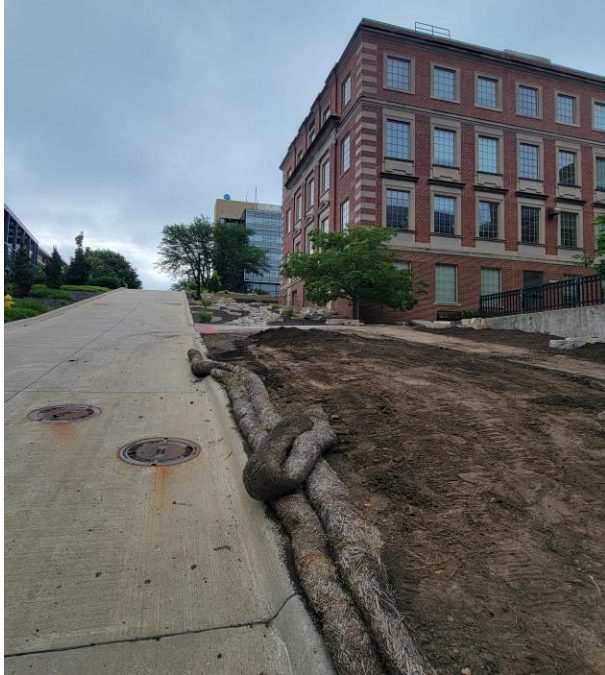
Chemistry Building Hillside

Before and during construction.



Chemistry Building Hillside

Extension down the hill to completion of stonework.



Class Of 1914 Overlook

Sluffing of hillside due to hydrant leak before restoration.



Class of 1914 Overlook

Reestablished hillside with pollinator garden.



Susan Hancher Memorial Rose Garden

Area before Rose Garden 2024



Susan Hancher Memorial Rose Garden

Completed rose garden spring 2025 using materials from the original rose garden and benches from the old Hancher Building.



Presidents Residence Front Entry

Before and after of the drop off area and outcropping stone installation at the entrance of the Presidents Residence.



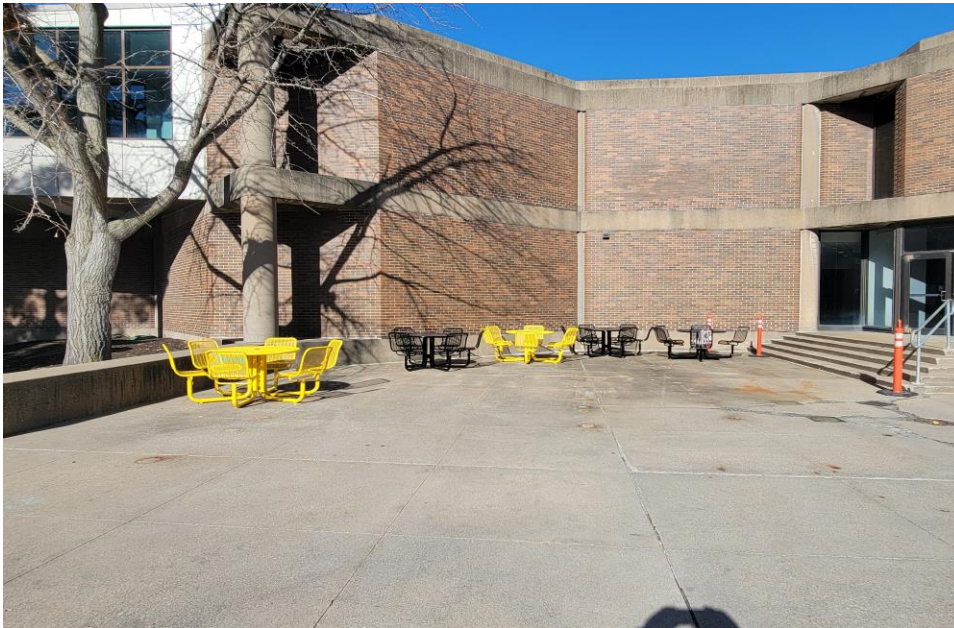
Seashore Green

Prairie planting and irrigation system in lawn area.



Bowen Sciences Building

Partnered with the College of Medicine to purchase and place new tables with umbrellas on the west side of Bowen



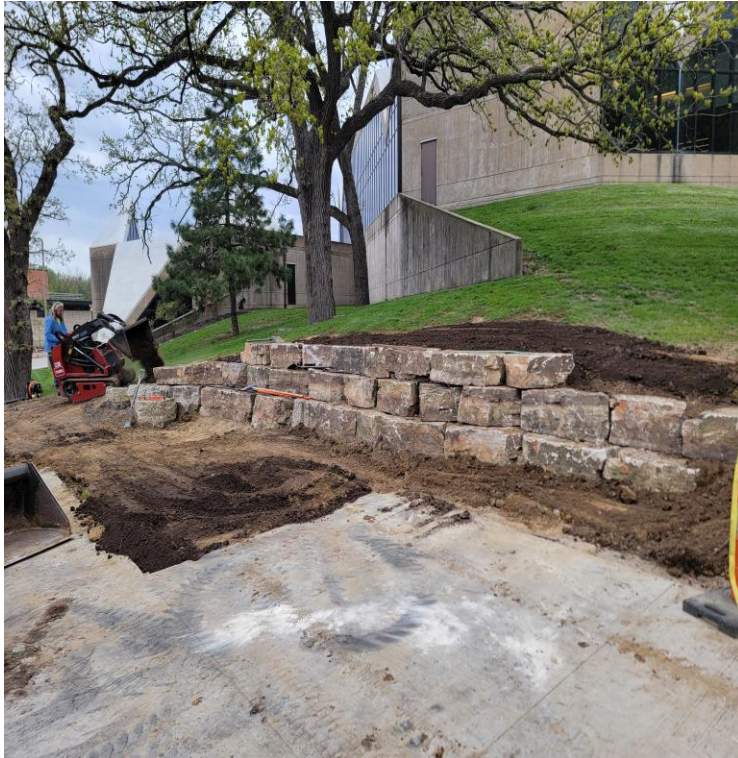
Lower Finkbine Prairie Remnants

Heard of goats eating invasive plants in the prairie remnants



Miscellaneous Projects

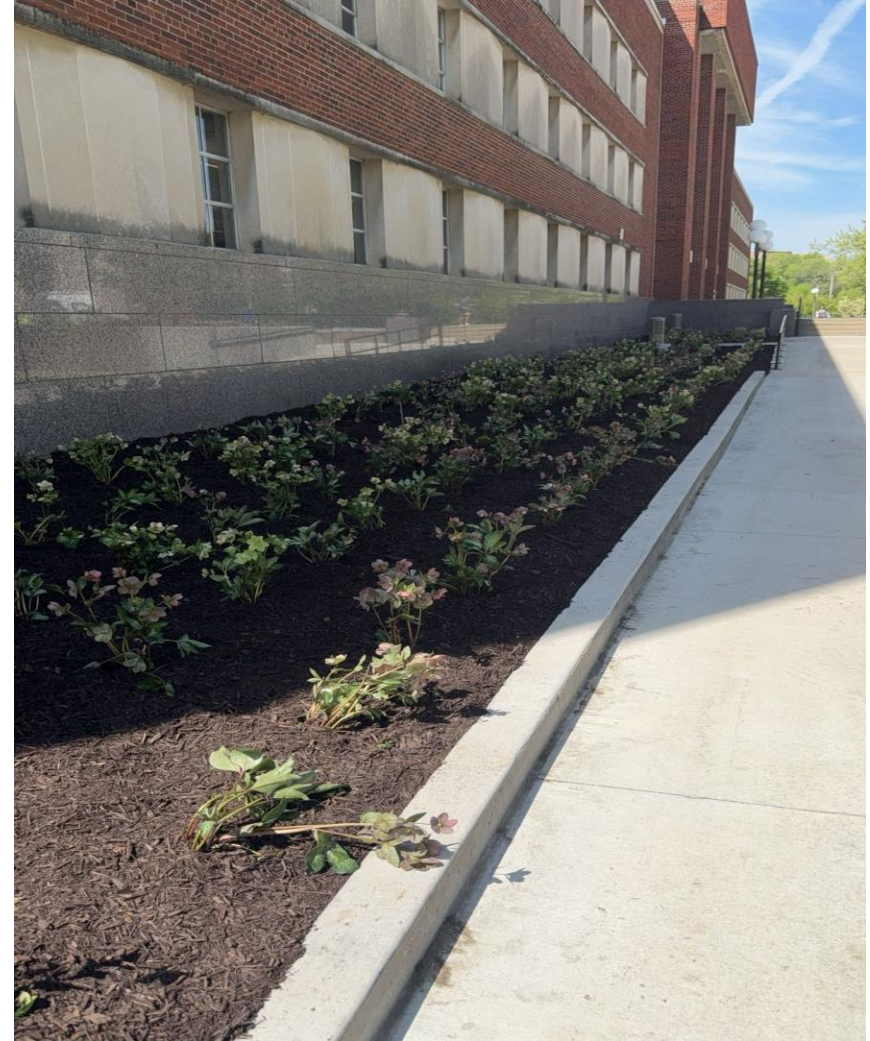
VA Bus Stop outcropping wall during and after completion



Miscellaneous Projects

CCOM fire lane paver inlay repairs

Main Library planting along north foundation



Amazon Prime Delivery Truck



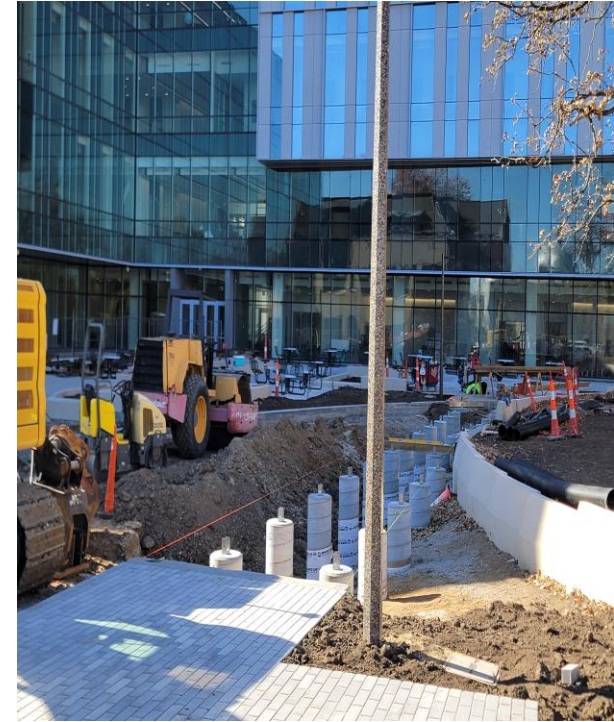
Capital Projects

Newton Road Roundabout



Capital Projects

Health Sciences Academic Building



Future Landscapes

Landscape Services Projects

- * Main Library South side
- * Quad Ravine renovation
- * EPB South entrance

Capital & Utility Projects

- * Biology Courtyard
- * Art Building Modernization
- * Performing Arts Annex
- * Master Plan SIP Projects
 - Pentacrest Irrigation (courtyards and west side)
 - Madison Street Gateway
 - Hubbard Park



Winter Preparation



Procedures

- Responsibility:** Building and Landscape Services handles winter maintenance for entrances, steps, sidewalks, loading docks, service drives, institutional roads, and Oakdale parking lots under UI Facilities Management.
- Goal:** Ensure safe pedestrian and vehicular traffic by removing snow and ice promptly, considering weather, workforce, equipment, and budget.
- Normal Hours:**
 - Main Campus: 6:00 a.m.–4:30 p.m. (Mon–Fri); initiated by Landscape Services leadership.
 - Oakdale Campus: 7:00 a.m.–3:30 p.m. (Mon–Fri); initiated by Maintenance Supervisor or Oakdale staff.



Procedures

- **Outside Normal Hours:** Snow calls initiated by UI Campus Safety as needed; Landscape Services may also monitor and start calls.
- **Calling Procedure:**
 - Street snowplow drivers contacted first; they alert supervisors to call sidewalk/shoveling crews.
 - Oakdale: Street contact also calls parking lot crew.
 - Weekday storms: Calls start by 2:30 a.m.; crews on routes by 4:00 a.m.
 - Weekend storms: Routes start by 6:00 a.m.
 - Exceptions: Thanksgiving and Christmas—sidewalks/building entrances cleared next day.



Procedures

Treatment Methods:

- Streets/service drives/Oakdale lots: Sand/salt mix.
- Sidewalks: Sand/salt or ice-melt mix.
- Steps: Ice-melt.
- **Follow-up:** Additional cleanup later in the day for safety hazards.



Snow Removal Priorities

- Priority for snow and ice removal:
 - In most instances snow and ice removal will occur simultaneously for roadways, parking lots, sidewalks and entrances. In situations when snow and ice occurs with heavy accumulation or is difficult to handle, the following priorities will be followed.
1. Roadways - roadways serving UIHC and University facilities
 2. Parking lots - accessible spaces, permit spaces, general spaces
 3. Primary sidewalks - main walkways traversing campus and leading to main building entrances
 4. Primary building entrances - main building entrances and accessible entrances
 5. Secondary sidewalks - walks not in primary route to campus facilities such as leading to side doors, back doors or limited access areas
 6. Secondary building entrances - side entrances, back entrances, limited access exits

Snow Removal Quick Facts

- 100+ buildings serviced
- 35 lane miles of road
- 82 miles of sidewalks
- 2 large road plows
- 1 JCB Telehandler
- 4 pickup plows
- 9 skid loaders
- 2 polar tracs
- 1 UTV plow
- 20 shovelers/salters

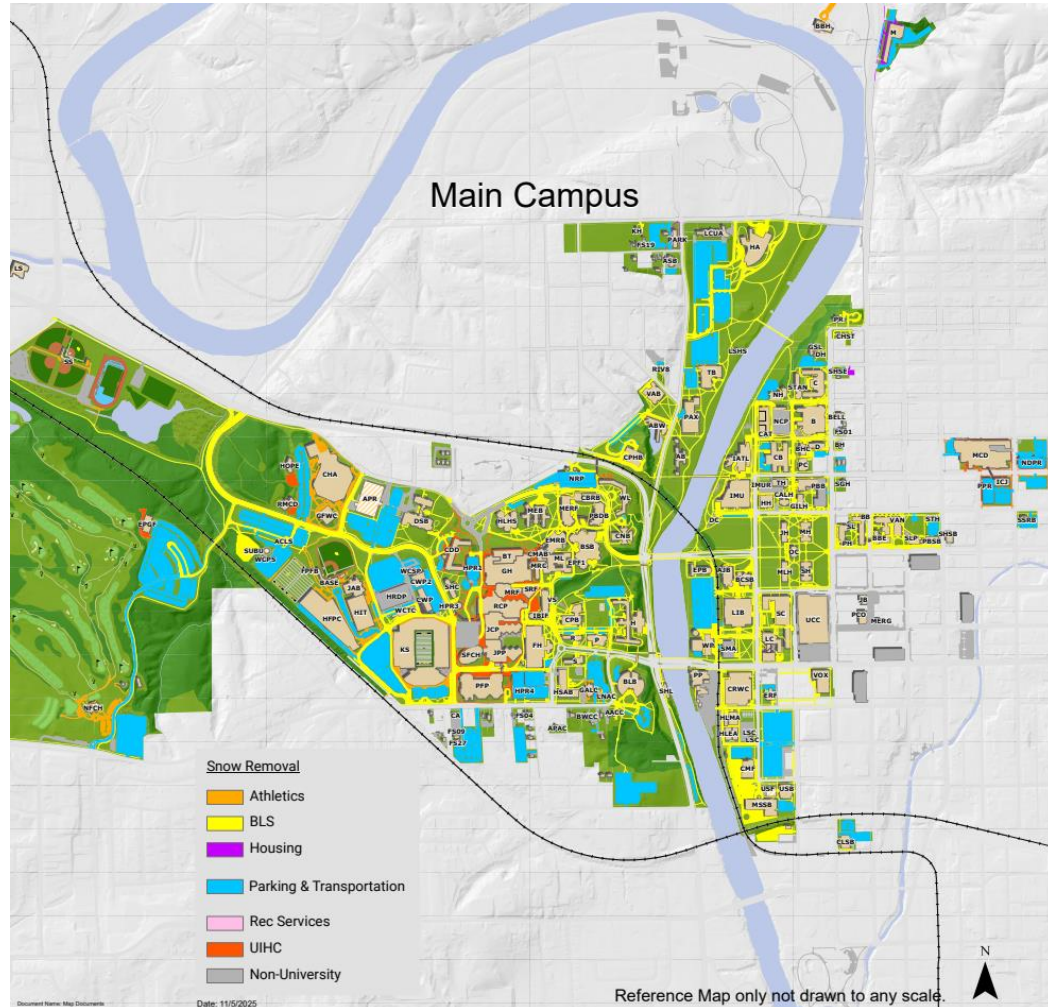
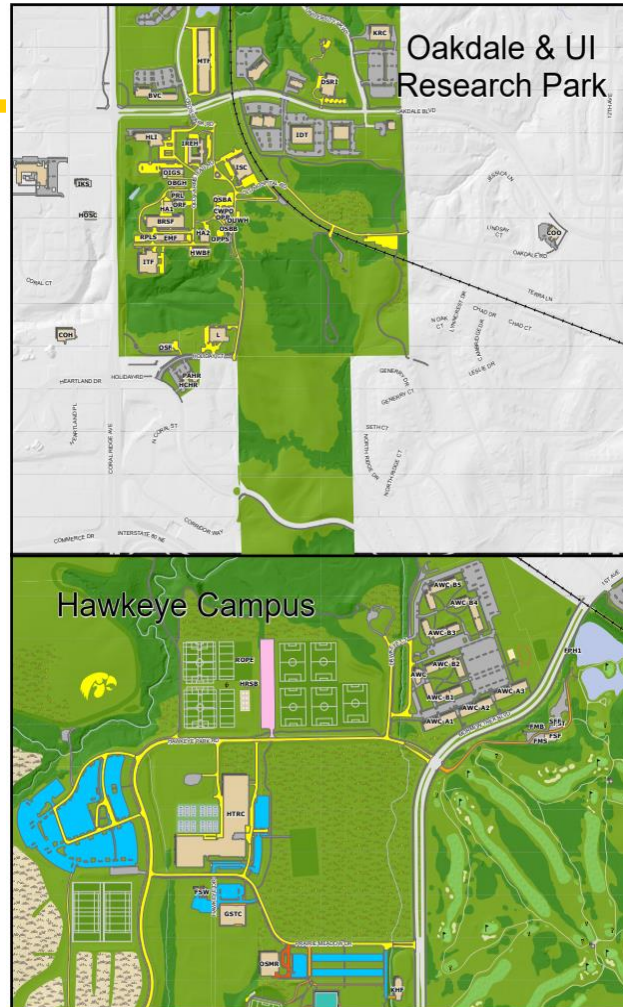


Personnel

- BLS main campus
 - 37 Merit Staff
 - 4 BOM Volunteers
 - 3 Supervisors
 - 1 Manager
- Oakdale
 - 10 Merit Staff
 - 1 Manager



Routes



Safety-Walking

- Plan ahead and give yourself extra time.
- Proper clothing (layers, gloves, hat, boots).
- Look down at the surface. If it's coated with ice, you might want to park in a different place.
- Don't walk with your hands in your pockets. This reduces the ability to use your arms for balance if you do slip.
- Take short shuffling steps in very icy areas.
- Avoid curbs with ice on them.
- Place your full attention on walking.
- Use handrails.
- Keep center of gravity over your support leg.
- Avoid walking on non-designated walkway areas.



Reporting Snow and Ice Issues

- Emergency dial 911
- Campus Safety Non-Emergency 319-335-5022
- Contact the Building Coordinator
 - Building Coordinators have information and access to FM and can help resolve any snow and ice issue relating to their building.
- FM@YourService Portal
 - Requests for service are processed through the FM@YourService portal. The portal is connected to other offices on campus (Parking and Transportation, department of Public Safety, BLS etc.) so that request can be channeled in an efficient way to the correct offices.

IOWA

Thank You for your partnership!

Questions?

→ uiowa.edu

Michael Weikamp
Manager
Landscape Services

michael-weikamp@uiowa.edu

Scott Gritsch
Director
Landscape Services

scott-gritsch@uiowa.edu

IOWA

Landscape Services

Michael Weikamp
Manager
Landscape Services

michael-weikamp@uiowa.edu

Thank you

Scott Gritsch
Director
Landscape Services

scott-gritsch@uiowa.edu

→ uiowa.edu

Utility Team Overview

November 2025 Building Coordinator Meeting
FM – UI Utilities, UI Energy Collaborative, ENGIE

Agenda

- Introductions and Roles
- What is the P3?
- Utility Capital Projects

Introductions

IOWA



UNIVERSITY OF IOWA
ENERGY COLLABORATIVE

engie

Rick Ney
UIEC

John Gantner
ENGIE

Alex Gansen
UIEC

Rob Murray
ENGIE

Tom Andreski
ENGIE

Alan Kremzar
ENGIE

Ben Anderson
UIU

Justin Whitty
UIU

Spenser
Williams
UIU

IOWA

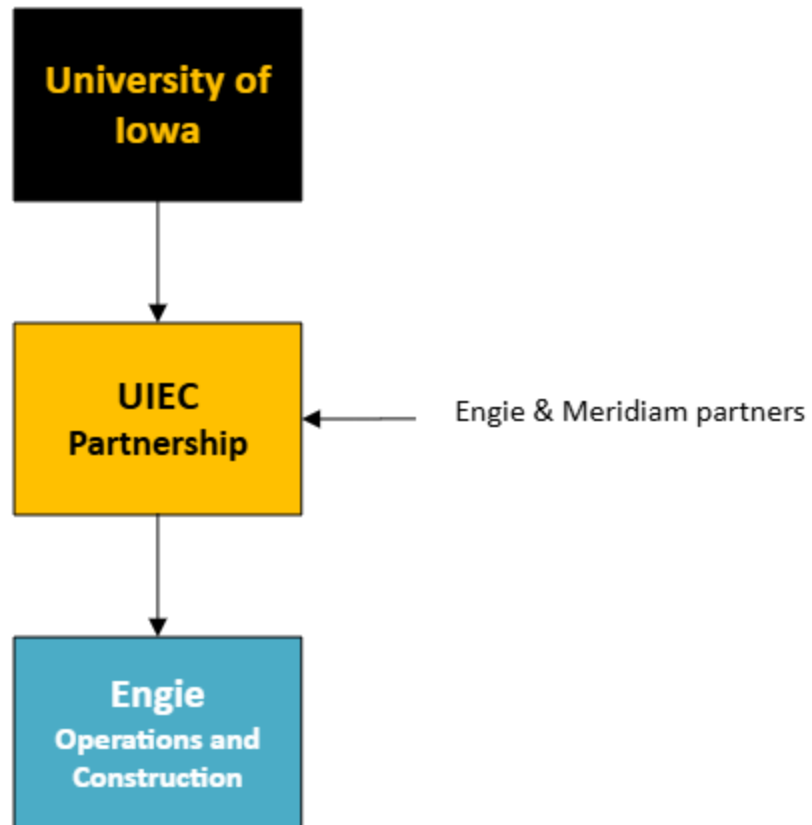
UI Utilities

What is the P3?



A public-private partnership
Explained

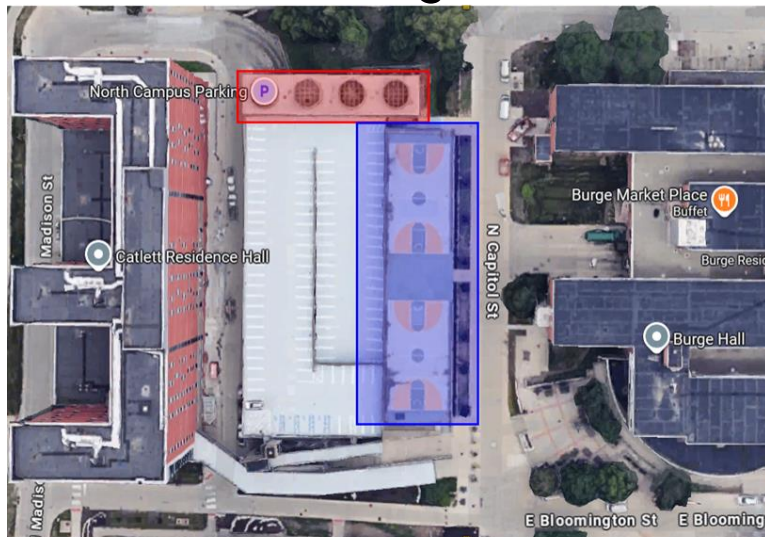
P3 Structure – Rick Ney



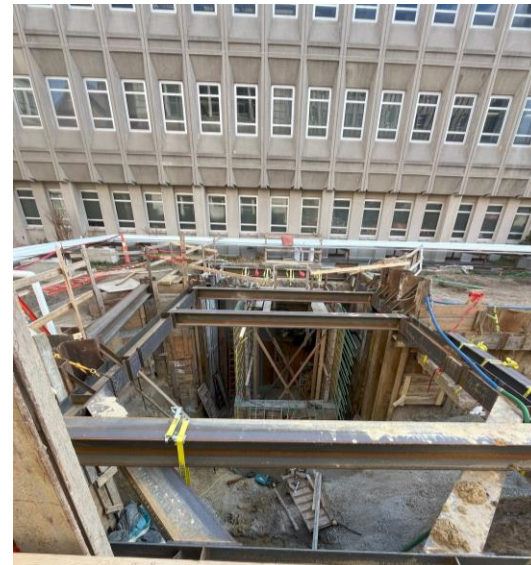
Utility Capital Projects – Rob Murray

Current Projects

- Chilled Water Plant 4 Improvements – North Campus Parking and CW
- Critical Tunnel Repairs – Biology and Van Allen
- Old Art Building Utilities



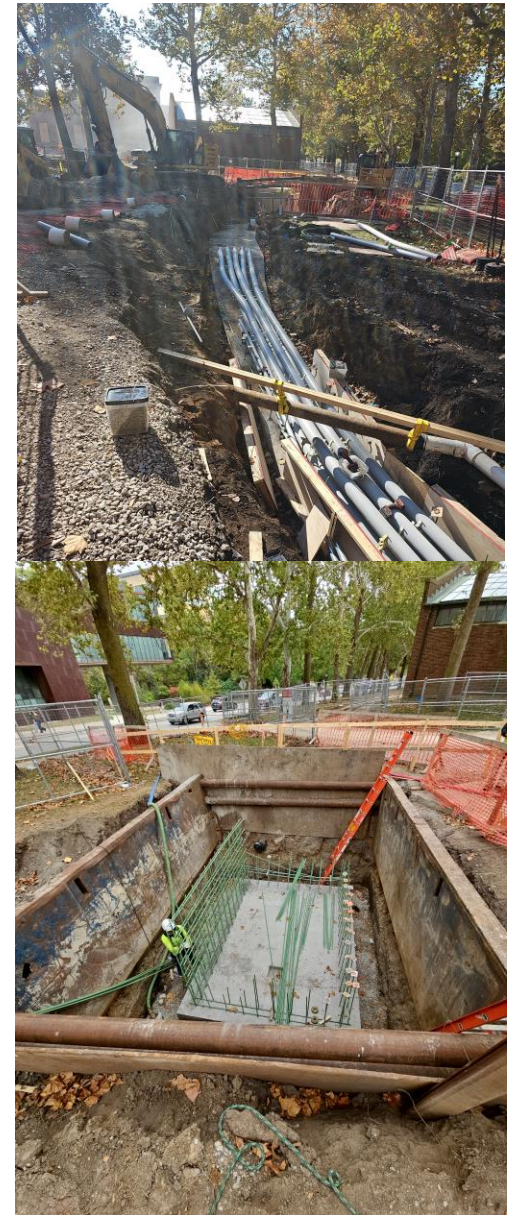
CWP4



Biology Courtyard

Upcoming Projects

- Water Tower – demo and commissioning – Spring 2026
- Replace Water Main – Newton Road to Art Building West
Summer 2026 – commence after finals – 14 weeks
- TA Cleary Utility Tunnel Supporting Projects - Madison St CW line and Chemistry steam



Old Arts Building Utilities

Utility Capital Projects - Future

- TA Cleary Tunnel
- New Chilled Water facility – study commencing
- Oakdale Utility Facilities Improvements
- West Campus Steam Plant
- Burlington St Bridge



Questions

IOWA

Thank you

→ uiowa.edu

IOWA

See you next year – monthly invites for the year will be sent out soon.

Feedback welcome by emailing: stephanie-rourke@uiowa.edu